



Ontario Ministry of Agriculture, Food
and Rural Affairs

Northern Livestock Expansion Implementation Strategy

Barry Potter





The Northern Livestock Pilot Action Plan

Le Plan d'action pour le Projet pilote pour l'élevage de bétail dans le Nord



Growing the Agri-Food Sector in Northern Ontario

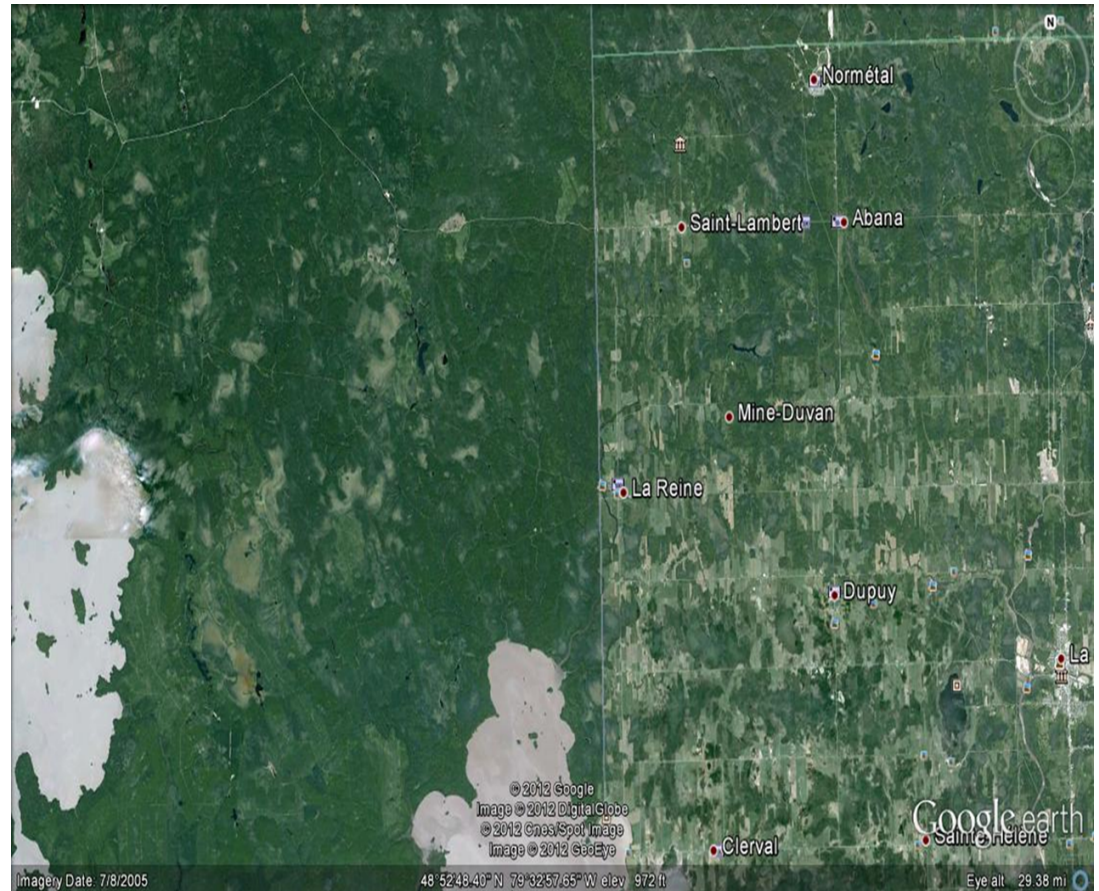
The Growth Plan for Northern Ontario - an Overview

The **Growth Plan for Northern Ontario** (released in 2011) is a strategic framework that will guide decision-making and investment planning in Northern Ontario over 25 years (to 2036). The Plan focuses on ways to leverage economic, social and natural capital more strategically, and on approaches to attract a wider range of opportunities to the North. It is a plan to stimulate growth by creating a diversified northern economy, stronger communities, a healthy environment and a skilled, adaptive and innovative workforce.





Québec Ontario Difference



Initiatives

1. Land
2. Indigenous engagement
3. Promotion
4. Technology transfer

Initiatives

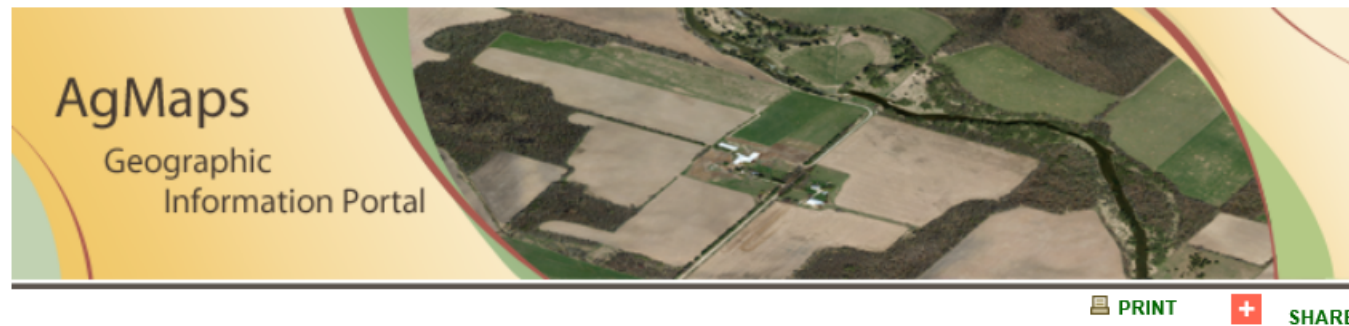
1. Land

- Crown Land
 - 8 Pilot Sites on Crown land
 - Work with government on access for ag
- Private Land Identification
 - NECN
 - Other groups
- Updating GIS and soil mapping



www.Ontario.ca/agmaps

Geographic Information Portal ✓
Geographic Information Portal Home
Agricultural Information Atlas
Geospatial Data Downloads
Canada Land Inventory Maps
Feed-in Tariff Program
Soil Survey Maps and Reports
Land Use Information



| [Agricultural Information Atlas](#) | [Canada Land Inventory](#) |
| [OMAFRA Program Data Set Descriptions](#) |
| [Map Gallery](#) | [Contact Information](#) |

[Launch the Agricultural Information Atlas](#)

Initiatives

2. Indigenous engagement

- Discussion with First Nations and Métis on land use and benefits of agriculture
- Course on beef farming at Kapuskasing



Indigenous Course

COLLÈGE BORÉAL

INTRODUCTION TO BEEF CATTLE FARMING

This 8-week Introduction to beef cattle farming course provides quality training to participants with modules consisting of in-class training and practical training at Collège Boréal, Kapuskasing campus and the Kapuskasing Demonstration Farm. This course offers an initiation into the key principles of beef cattle farming. The participants will obtain valuable skills which will help them either successfully integrate the labour force at a beef cattle production farm or consider the possibility of starting their own beef cattle enterprise.

Initiatives

3. Promotion

- Ontario.ca/farmnorthresources
- BeefNorth.ca
- FarmNorth.com



Ontario.ca/farmnorthresources



MINISTRY OF AGRICULTURE, FOOD AND RURAL AFFAIRS

[HOME](#) | [ABOUT](#) | [AGRICULTURE](#) | [FOOD](#) | [RURAL](#) | [RESEARCH](#) | [PUBLICATIONS](#) | [NEWS](#) | [CONTACTS](#)

Northern Ontario

Northern Ontario Agriculture,
Aquaculture and Food
Processing Sector Strategy

Northern Livestock Pilot

Growth Plan for Northern
Ontario

Northern Ontario Agriculture
Statistics

Northern Agriculture
Development Advisors

AICC Contact Centre

Topics



Starting a Farm in Northern Ontario





STARTING A FARM IN NORTHERN ONTARIO

ONLINE COURSE REGISTRATION

COURSE OVERVIEW

An important part of maintaining a strong agricultural sector is ensuring potential farmers receive the knowledge and tools they need to succeed and grow their business. This course is intended as a collection of practical, relevant and accessible resources for current and potential farmers considering farming in Northern Ontario.



I'm not a robot



reCAPTCHA
Privacy - Terms

REGISTER NOW



Beef*North*

COW HERD EXPANSION
in Northern Ontario

[About](#)

[Districts](#)

[Resources](#)

[Assistance Programs](#)

[CHE Chatter](#)

[Videos](#)

[Community](#)

[Events](#)

[Contact](#)



EXPANDING ONTARIO'S BEEF INDUSTRY



HOME

DISTRICTS

BUSINESS

REAL ESTATE▼

RESEARCH

EVENTS

ABOUT▼



Initiatives

4. Technology transfer

- Use survey results to focus on needs of producers
- Focus on specific research
- Establish steering committee



Survey Results

- Continue Analysis
- Identify areas of improvement
- Focus training



Research

- New Liskeard Agriculture Research Station (NLARS)
 - Grazing management
 - Northern genetics improvement
- New directions
 - Social / economic challenges
 - Soil / water health
 - Climate change



Northern Livestock Pilot

Steering Committee

- The Steering Committee will be a forum for collaboration and information sharing to support the successful implementation of commitments in the Action Plan by the partners.
- Membership will include representatives from the Beef Farmers of Ontario, Northeast Ontario Municipalities, Indigenous communities, and the provincial government.
- The steering committee will meet on a regular basis beginning this winter.



Questions ???

